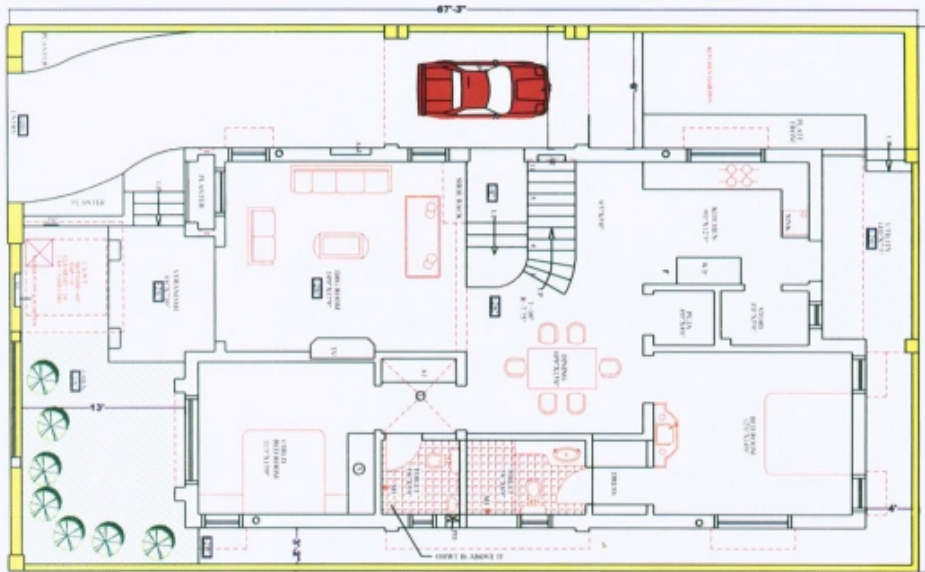


## North Facing 2 BHK



Ground Floor Plan

### Ground Floor Plan

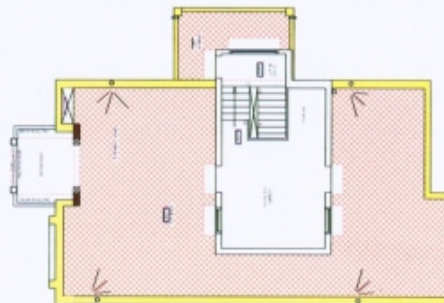
Area - 1344.87 Sq. Ft. (Built-up Area)  
 Area - 74.95 Sq. Ft. (Ver.)  
 Area - 135.00 Sq. Ft. (Porch)  
 Area - 105.50 Sq. Ft. (Utility)

### Mummy & Terrace Plan

Area - 351 Sq. Ft. (Mummy Area)  
 Area - 62.52 Sq. Ft. (Covered Ver.)

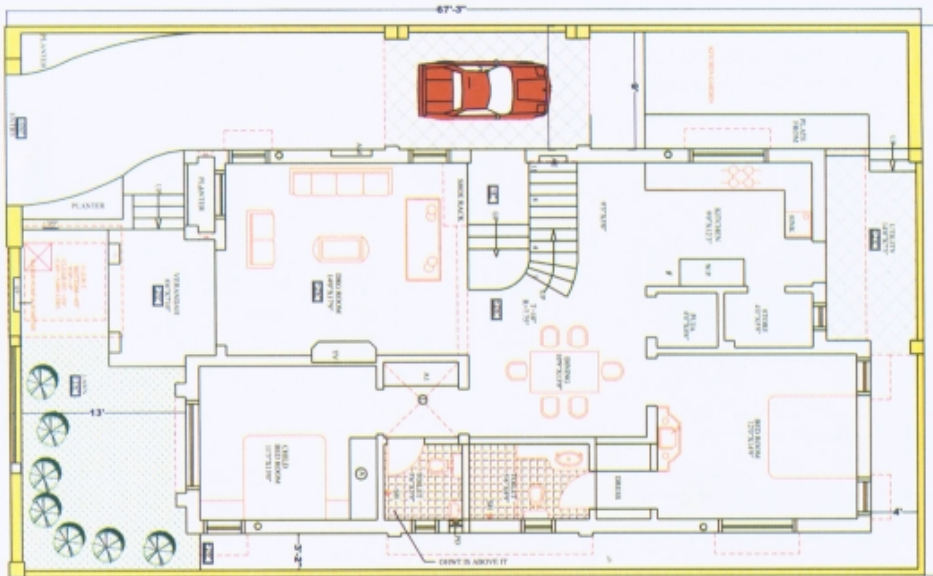
Total Area: 1885.00 Sq. Ft. (Built-up Area)

Area: 300 Sq. Yards (2 BHK)



Mummy & Terrace Plan

## North Facing 3 BHK



Ground Floor Plan

**Ground Floor Plan**

Area - 1344.87 Sq. Ft. (Built-up Area)  
 Area - 74.95 Sq. Ft. (Ver.)  
 Area - 135.00 Sq. Ft. (Porch)  
 Area - 105.50 Sq. Ft. (Utility)

Total Area: 2170.00 Sq. Ft. (Built-up Area)  
 Area: 300 Sq. Yards (3 BHK)

**First Floor Plan**

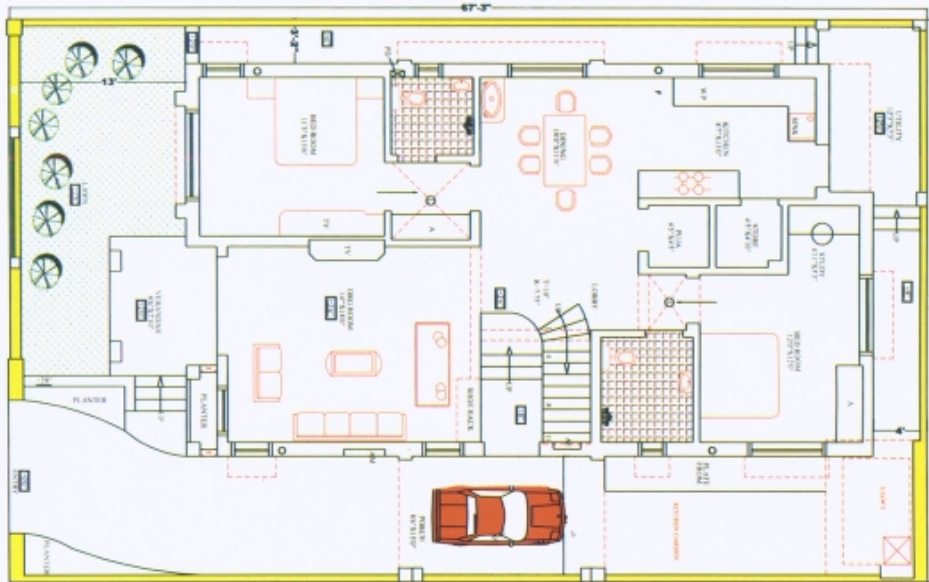
Area - 622.43 Sq. Ft. (Built-up Area)  
 Area - 90.79 Sq. Ft. (Covered Ver.)



First Floor Plan



## South Facing 2 BHK



Ground Floor Plan

### Ground Floor Plan

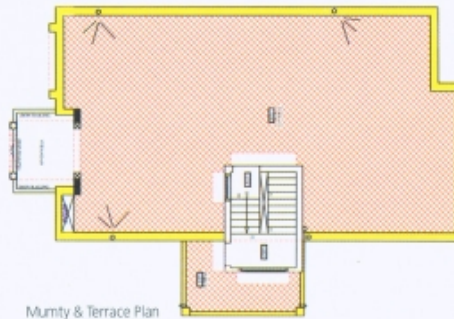
- Area - 1366.10 Sq. Ft. (Built-up Area)
- Area - 74.95 Sq. Ft. (Ver.)
- Area - 135.00 Sq. Ft. (Porch)
- Area - 95.45 Sq. Ft. (Utility)

Total Area: 1671.00 Sq. Ft. (Built-up Area)

Area: 300 Sq. Yards (2 BHK)

### Murthy & Terrace Plan

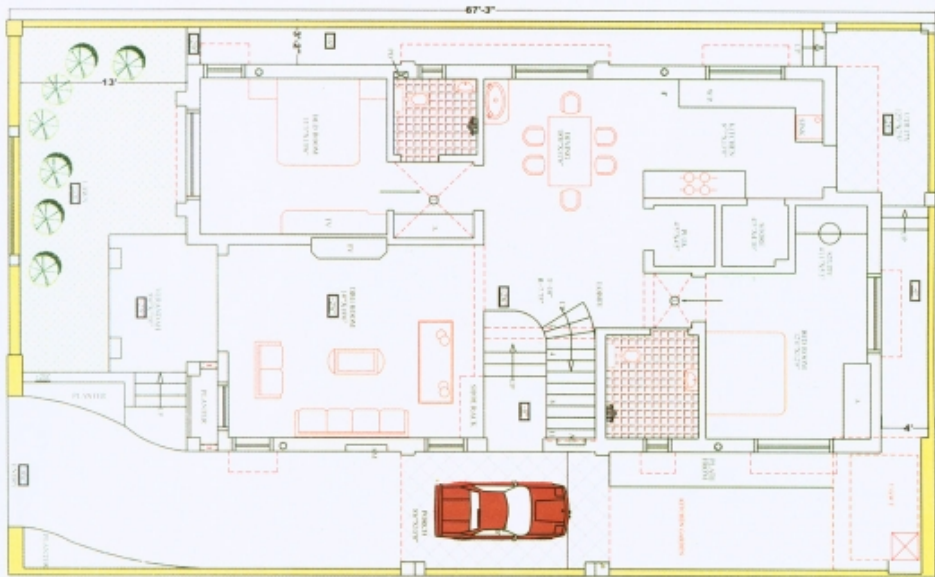
- Area - 121 Sq. Ft. (Murthy Area)
- Area - 62.52 Sq. Ft. (Covered Ver.)



Murthy & Terrace Plan



## South Facing 3 BHK



Ground Floor Plan

**Ground Floor Plan**

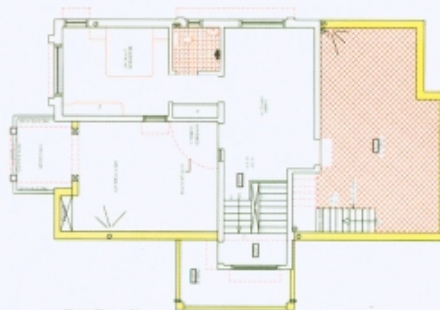
- Area - 1366.10 Sq. Ft. (Built-up Area)
- Area - 74.95 Sq. Ft. (Ver.)
- Area - 135.00 Sq. Ft. (Porch)
- Area - 95.45 Sq. Ft. (Utility)

Total Area: 2210.00 Sq. Ft. (Built-up Area)  
 Area: 300 Sq. Yards (3 BHK)



**First Floor Plan**

- Area - 646.87 Sq. Ft. (Built-up Area)
- Area - 90.19 Sq. Ft. (Covered Ver.)



First Floor Plan